

10/100BASE - TX TRANSFORMER MODULE

Ruggedized



- Compliant with IEEE 802.3 standards
- 350µH OCL with 8mA DC bias at 100KHz, 100mV
- Operating Temperature: -40°C to +85°C
- Storage Temperature: -55°C to +125°C
- Dielectric Withstanding Voltage (DWW): 1500 Vrms
- Lead Finish: Sn63/Pb37
- Moisture Sensitivity Level: 1
- Low profile surface mount package, Open construction

Electrical Specifications @ 25°C

Part Number	Insertion Loss (dB MAX)				Return Loss (dB MIN)				Cross Talk (dB MIN)			CM to CM Rejection (dB MIN)		
	0.10 MHz	30 MHz	60 MHz	100 MHz	30 MHz	60 MHz	80 MHz	100 MHz	30 MHz	60 MHz	100 MHz	30 MHz	60 MHz	100 MHz
100B-1035	1.2	1.2	1.2	1.2	16	14	10	8	45	40	37	35	30	25

NOTES:

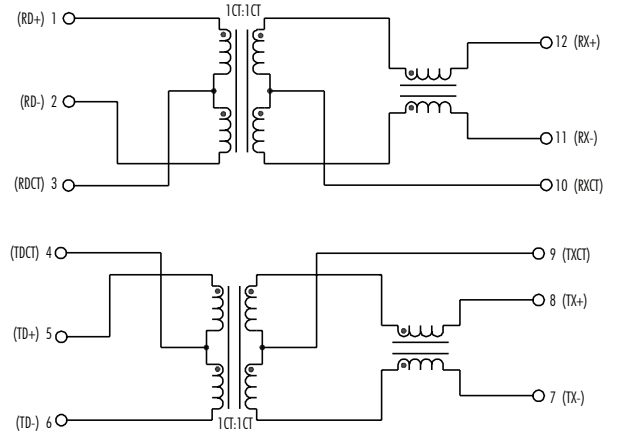
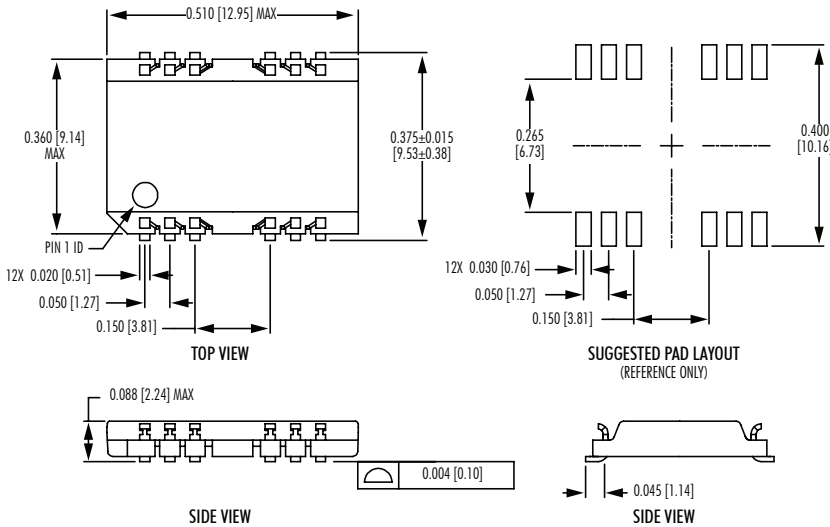
- Add suffix "NL" for RoHS compliant version; i.e. 100B-1035 becomes 100B-1035NL.
- For Tape & Reel packaging, add "T" suffix at the end of the part number: i.e. 100B-1035T.

Mechanicals

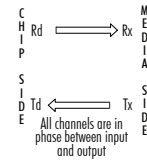
Electrical Schematics

100B-1035

Dimensions: inch [mm]
Tolerance (unless otherwise specified): ±0.010 [0.25]



LEGEND



iNRCORE, LLC
311 Sinclair Road, Bristol, PA 19007-6812 USA
Tel: +1.215.781.6400 Fax: +1.215.781.6430

www.iNRCORE.com

M316.G (30MAR23)

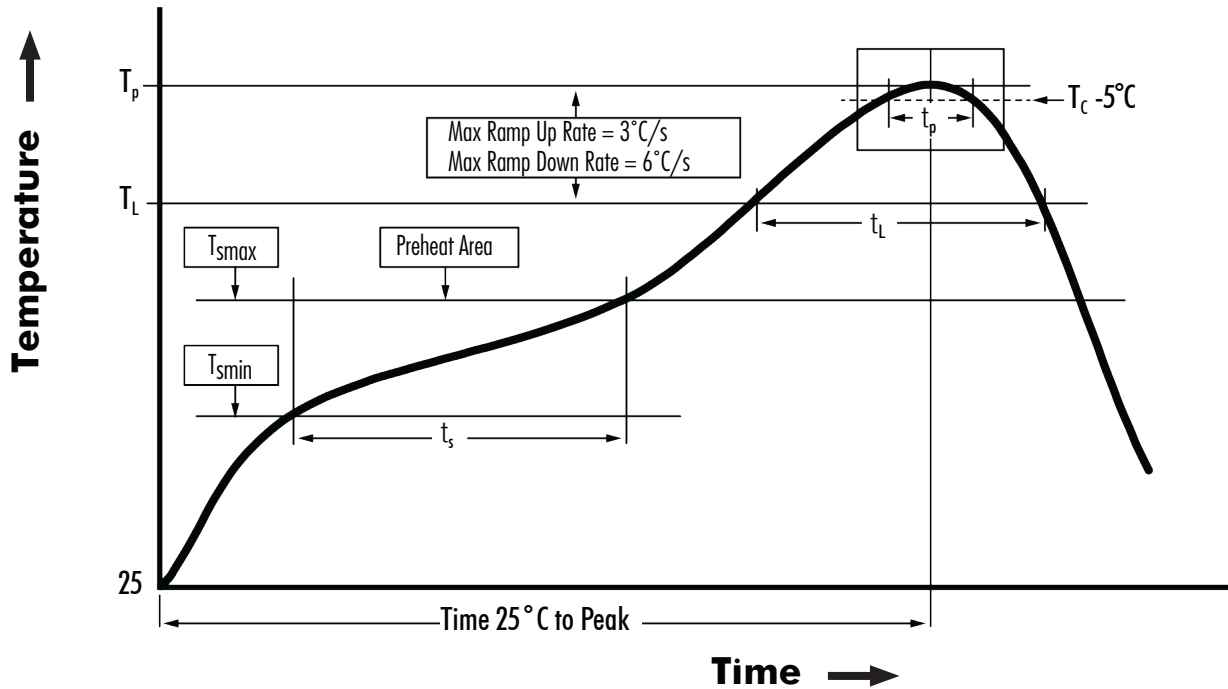
Performance warranty of products offered on this data sheet is limited to the parameters specified. Data is subject to change without notice. Other brand and product names mentioned herein may be trademarks or registered trademarks of their respective owners. © Copyright, 2020. iNRCORE, LLC. All rights reserved.



10/100BASE - TX TRANSFORMER MODULE

Ruggedized

Recommended Reflow Profile (Based on J-STD-020D)



T_{SMIN} (°C)	T_{SMAX} (°C)	T_L (°C)	T_P (°C MAX)	t_S (s)	t_L (s)	t_P (s MAX)	Ramp-up rate (T_L to T_P)	Ramp-down rate (T_P to T_L)	Time 25°C to peak temperature (s MAX)
100	150	183	220	60 - 120	60 - 150	20	3°C/s MAX	6°C/s MAX	360

NOTES:

1. All temperatures measured on the package leads.
2. Maximum number of reflow cycles not to exceed 2.



iNRCORE, LLC
311 Sinclair Road, Bristol, PA 19007-6812 USA
Tel: +1.215.781.6400 Fax: +1.215.781.6430

www.iNRCORE.com

M316.G (30MAR23)

Performance warranty of products offered on this data sheet is limited to the parameters specified. Data is subject to change without notice. Other brand and product names mentioned herein may be trademarks or registered trademarks of their respective owners. © Copyright, 2020. iNRCORE, LLC. All rights reserved.