

High Frequency SMT Balun Adaptor

Ruggedized



- ⚙ Transforms a balanced differential signal to a 50 Ω or 75 Ω , Grounded unbalanced signal
- ⚙ Wide bandwidth 1.0 MHz – 1.485 GHz
- ⚙ Moisture Sensitivity Level: 3

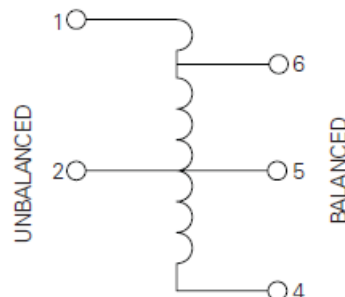
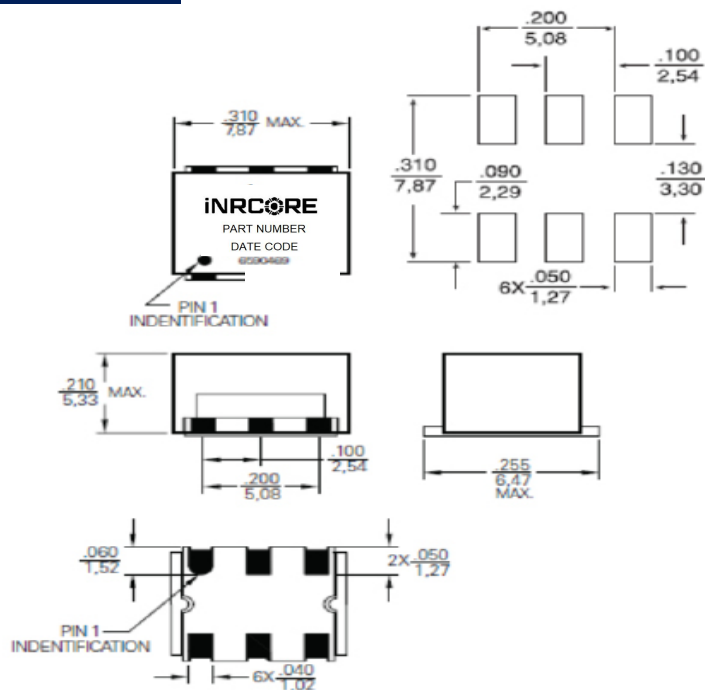
Electrical Specifications @ 25 °C – Operating Temperature – 40 °C to +85 °C

Part Number	Impedance Unbalanced	Impedance Balanced	Insertion Loss (dB MAX) 1.0 MHz - 1.485 GHz	Return Loss (dB MIN) 1.0 MHz - 1.485 GHz
T-050150	50	150	-2	12 dB
T-050100	50	100	-2	12 dB
T-050078	50	78	-2	12 dB
T-075100	75	100	-2	12 dB

Mechanical

Electrical Schematic

T-050XXX

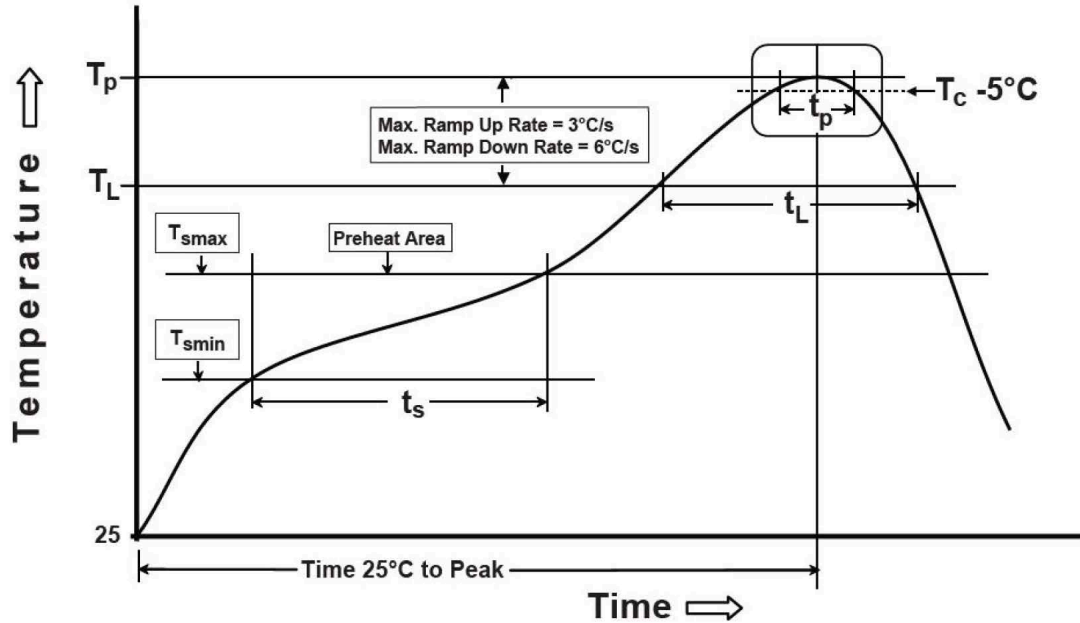


Dimensions: $\frac{\text{Inches}}{\text{mm}}$

Unless otherwise specified, all tolerances are: $\pm \frac{.010}{0,25}$



Tin/Lead Recommended Reflow Profile (Based on J-STD-020D)



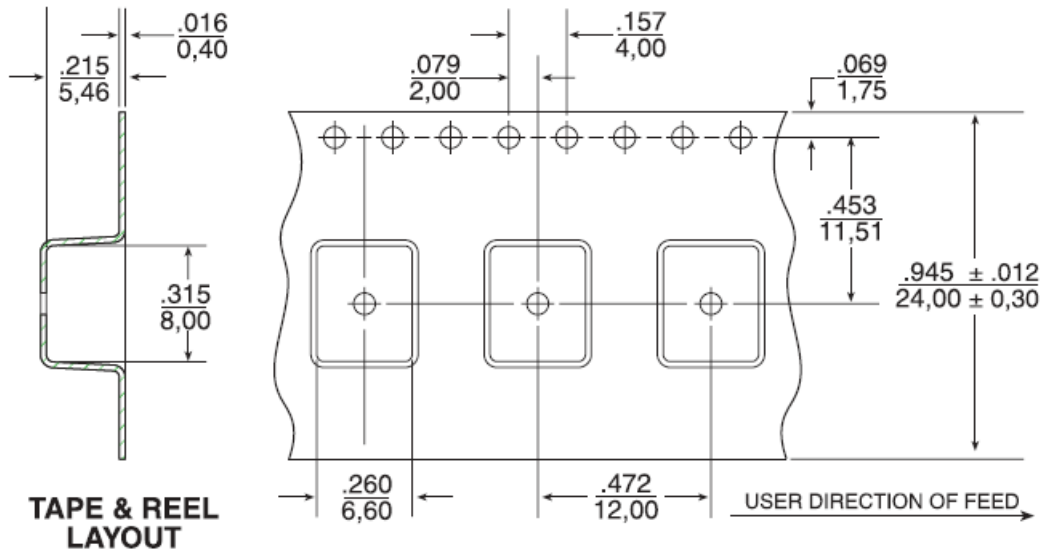
T_{SMIN} (°C)	T_{SMAX} (°C)	T_L (°C)	T_P (°C MAX)	t_s (s)	t_L (s)	t_p (s MAX)	Ramp-up rate (T_L to T_P)	Ramp-down rate (T_P to T_L)	Time 25°C to peak temperature (s MAX)
100	150	183	235	60-120	60-150	20	3°C/s MAX	6°C/s MAX	360

Notes:

1. All temperatures measured on the package leads.
2. Maximum times of reflow cycle: 2.

Tape & Reel Specifications

T-050XXX1



For More Information

iNRCORE, LLC
311 Sinclair Road Bristol,
PA 19007-6812 U.S.A
Tel: + 1.215.781.6400
Fax: +1.215.7816430

Global Sales Representatives and Locations:

<http://www.inrcore.com>

Performance warranty of products offered on this data sheet is limited to the parameters specified. Data is subject to change without notice. Other brand and product names mentioned herein may be trademarks or registered trademarks of their respective owners. © Copyright, 2020. iNRCORE, LLC. All rights reserved.

