

# HIGH-FREQUENCY BALUN ADAPTOR FOR SMPTE-292M HDTV



Ruggedized

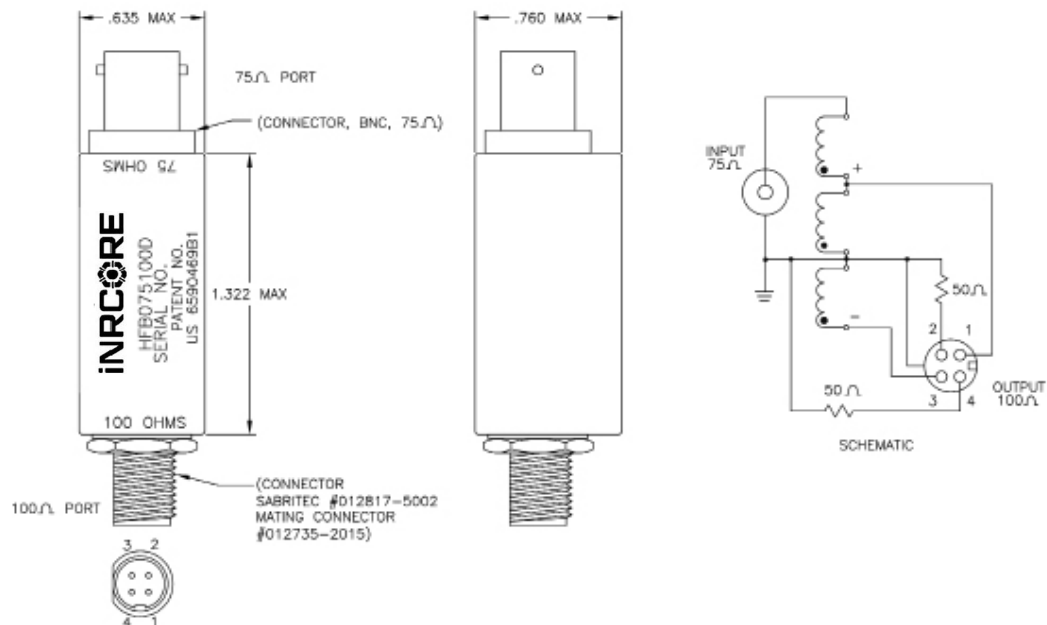
- ⚙ Transforms 75Ω, Grounded unbalanced signal to 100Ω balanced differential signal
- ⚙ Bi-Directional
- ⚙ Designed for SMPTE-292M HDTV application at 1.485GBs data rate
- ⚙ Operating & Storage Temperature: -55°C to +125°C
- ⚙ Moisture Sensitivity Level: 1

Characteristics				
Part Number	Impedance Unbalanced	Impedance Balanced	Insertion Loss db MAX. 1.485 GBs	Jitter Dj pSec. Max. 1.485 GBs, PN7
HFB075100D	75	100	-2.0	110.0

## Mechanical

## Schematic

**HFBM75100D**



### For More Information

iNRCORE, LLC  
311 Sinclair Road Bristol,  
PA 19007-6812 U.S.A  
Tel: + 1.215.781.6400  
Fax: +1.215.7816430

**Global Sales Representatives and Locations:**  
<http://www.inrcore.com>

Performance warranty of products offered on this data sheet is limited to the parameters specified. Data is subject to change without notice. Other brand and product names mentioned herein may be trademarks or registered trademarks of their respective owners. © Copyright, 2020. iNRCORE, LLC. All rights reserved.

