

SMT GATE DRIVE TRANSFORMER

Ruggedized

PL3159NL



- ⚙ Three Windings (one drive and two gates)
- ⚙ Operating Frequency: 50kHz and up
- ⚙ Lead Finish: Pure Tin
- ⚙ Moisture Sensitivity Level: 1

Electrical Specifications @ 25 °C – Operating Temperature – 55°C to +125 °C

Part ³ Number	Turns Ratio	Max (V*µsec)	Primary Inductance (µH MIN)	Leakage Inductance (µH MAX)	DCR Primary (Ω MAX)	DCR Secondary (Ω MAX)	Pri-Sec Insulation
PL3159NL	1:1:1	21	507	0.4	0.85	0.85	2700Vdc

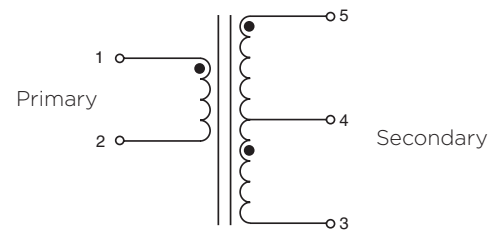
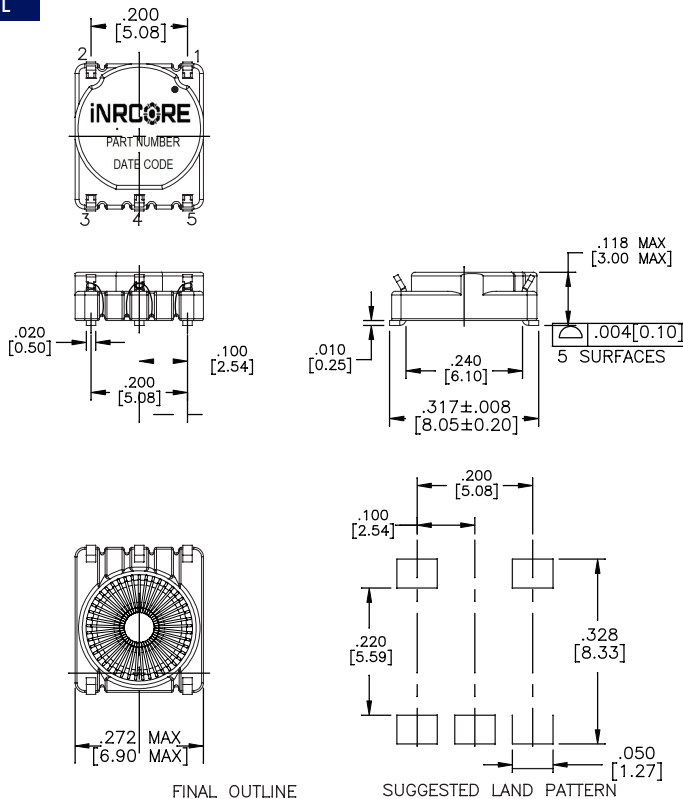
Notes:

1. The Maximum volt-µsec rating limits the peak flux density to 2200 Gauss when used in a unipolar drive application.
(ie: (volt*µsec rating) = (voltage applied to the primary) * duty cycle / Frequency.
2. Leakage inductance is measured at primary terminals with all sec-ondaries shorted.
3. Optional Tape & Reel packaging can be ordered by adding a "T" suffix to the part number (i.e. PL3159NL becomes **PL3159NLT**).
4. The "NL" suffix indicates an RoHS-compliant part number. Non-NL suffixed parts are not necessarily RoHS compliant, but are electrically and mechanically equivalent to NL versions.
If a part number does not have the "NL" suffix, but an RoHS compliant version is required, please contact iNRCORE for availability.
5. The temperature of the component (ambient plus temperature rise) must be within the stated operating temperature range.

Mechanical

Electrical Schematic

PL3159NL

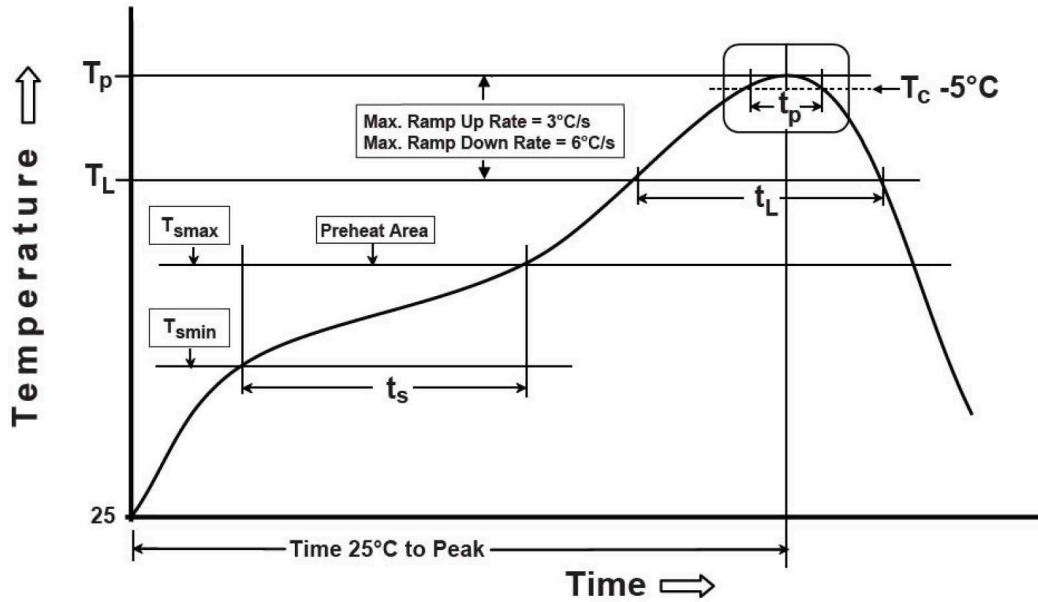


Weight 0.25 grams
 Tube 75/tube
 Tape & Reel 1000/reel

Dimensions: $\frac{\text{Inches}}{\text{mm}}$
 Unless otherwise specified,
 all tolerances are $\pm \frac{.005}{0.15}$



Non-Lead Recommended Reflow Profile (Based on J-STD-020D)



T_{SMIN} (°C)	T_{SMAX} (°C)	T_L (°C)	T_P (°C MAX)	t_s (s)	t_L (s)	t_p (s MAX)	Ramp-up rate (T_L to T_P)	Ramp-down rate (T_P to T_L)	Time 25°C to peak temperature (s MAX)
150	200	217	245	60-120	60-150	30	3°C/s MAX	6°C/s MAX	480

Notes:

1. All temperatures measured on the package leads.
2. Maximum times of reflow cycle: 2.

For More Information

iNRCORE, LLC
 311 Sinclair Road Bristol,
 PA 19007-6812 U.S.A
 Tel: + 1.215.781.6400
 Fax: +1.215.7816430

Global Sales Representatives and Locations:
<http://www.inrcore.com>

Performance warranty of products offered on this data sheet is limited to the parameters specified. Data is subject to change without notice. Other brand and product names mentioned herein may be trademarks or registered trademarks of their respective owners. © Copyright, 2020. iNRCORE, LLC. All rights reserved.

